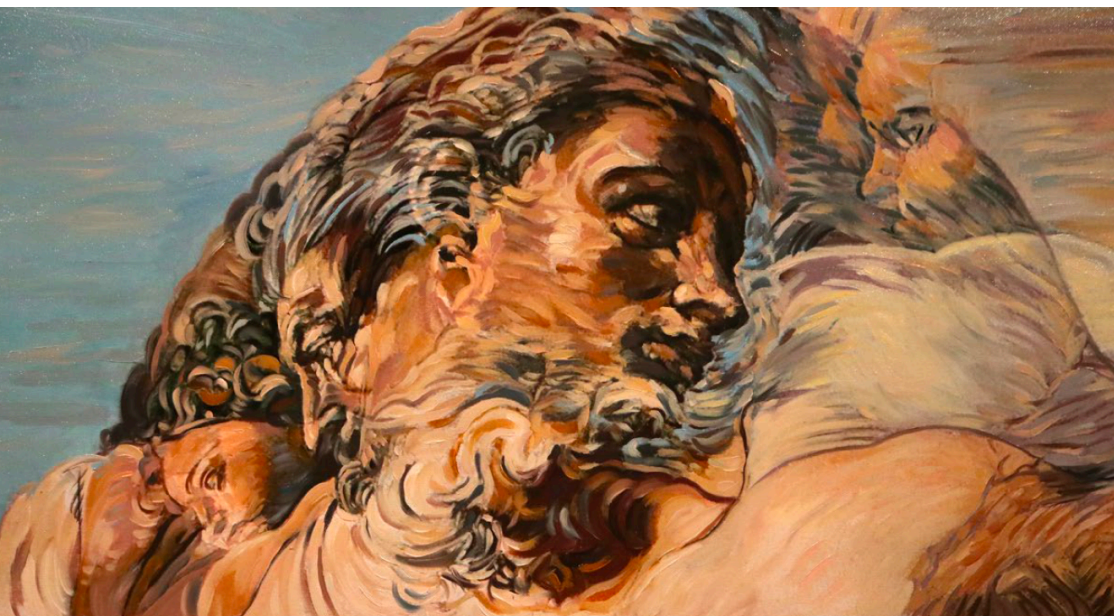


# Departing Angels

Italy is more than the sum of its parts. It is not just the food, the people, and the places: it has a quality that is almost impossible to define, or more importantly, replicate. And then, of course, there's the art of Italy.

Words by Emily Howe





Italy is more than the sum of its parts. It is not just the food, the people, and the places: it has a quality that is almost impossible to define, or more importantly, replicate. It's in their coffee, their gestures, and their impossibly stylish shoes and clothing. And then, of course, there's the art of Italy.

With COVID-19 and its relentless lockdowns chaining artists to their easels, the quantity of contemporary art coming out of Italy has almost quadrupled—a fact that Italian art specialist Raffaele Tranzillo is more than aware of and is quite determined to bring to our attention. Tranzillo, who has been an ardent promotor of Italian art since the days when he was skipping school to sneak away to exhibitions in Rome, is married to Perth actress Emily Howe. Together they are bringing a selection of some of the top established and emergent contemporary Italian artists exclusively to Perth to be presented in the Whitespace Studio Gallery in Fremantle.

Alessandro Giusberti headlines the exhibition, whose career in expressionism, impressionism, and realism has spanned more than thirty years. His exhibitions across Europe and America, as well as Sao Paulo in Brazil, have consistently met both public and critical acclaim, and he is well represented in public and private collections worldwide.

Accompanying Giusberti will be selected works by artists both emergent and established from across Italy. Among them is surrealist Simone Miani, portraitist Michelino Iorizzo, and disciple of Roberto Ferris, Alfredo Tramutoli. Amalfi Coast artist Giorgio Della Monica is also included, along with works from Riccardo Ruberti's acclaimed series 'Navigazione Celeste,' select pieces from popular Roman illustrator Alessandra Carloni, and much more.

Arte Arechi: La Mostra will be on show at Whitespace Studio Gallery in Fremantle, May 13—19, 2021.

@whitespacestudiogallery

Alessandro Giusberti, *U-Nion*, oil on canvas, 140x110 cm.

## Get the Glosswood look



Refresh your interior with Glosswood's Prefinished Timber Lining Boards for walls and ceilings

**GLOSSWOOD**  
www.glosswood.com.au